

Pennyroyal  
at Kurunjang



BALLARAT

M

M8

A300

CBD

M1

GEELONG

# MELT♥N

- 4 A long history. A bright future.
- 6 Business opportunities
- 8 Getting around
- 10 School's in
- 12 The sporting life
- 14 Shop, eat, enjoy
- 16 At your leisure
- 18 Pennyroyal – Melton living at its best

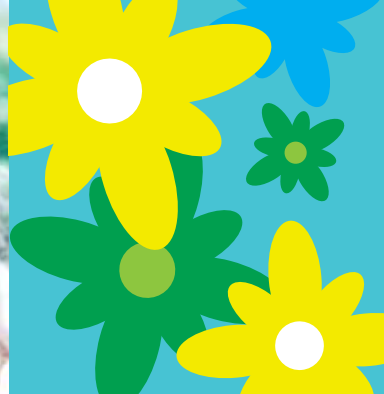
# A long history. A bright future.

Named after a town in Leicestershire, UK, Melton was first settled by Europeans in the 1830s and opened its own post office in 1856.

Since then, Melton has become the second-fastest-growing municipality in Australia with population doubling over the last decade to 118,479.

The number of residents is expected to grow to 241,000 by 2031, which is almost the size of the Sunshine Coast today.

With so much on offer it's easy to see why Melton is so popular.



# Business opportunities

**Melton's rapidly growing population creates opportunities for business.**

Melton Council is supporting new, existing and potential businesses with a range of programs that foster sustainable growth and competitiveness.

Businesses in Melton enjoy access to transport links, plentiful industrial land and a young, skilled labour force.



## Getting around

Melton is only a 33-minute drive from Melbourne. And good access to the Western Freeway, Westgate Highway, Calder Highway, Melton Highway and City Link make travelling a breeze.

If you'd prefer to relax and let someone else take you to your destination, you can take the local train to Melbourne in just 37 minutes from the fully-staffed Melton Station, which has parking for 300 cars.

Six bus routes service the local area, connecting to Woodgrove Shopping Centre, Caroline Springs and Melton Station. There are also two nightrider bus services for those who like to party in the city.



## School's in

Melton has over 27 educational institutions. There are private and government schools, early learning centres, preschools and a campus of Victoria University.

Melton Secondary College recently opened a brand new Science and Learning Centre. 2012 was a successful year for the college with the vast majority of year 12 students receiving their first preference for university.

Some local schools:

- ✓ Melton West Primary School
- ✓ Wedge Park Primary School
- ✓ St Catherine's Catholic Primary School
- ✓ Melton Secondary College
- ✓ Kurunjang Secondary College
- ✓ Catholic Regional College
- ✓ Staughton Secondary College
- ✓ Victoria University



ABC  
DEF



# The sporting life

**If you like sport, whether it's playing, watching or helping out, Melton has a huge range of clubs and facilities where you can get involved.**

The Macpherson Park Recreation Reserve has ovals, courts and other facilities. Melton boasts seven skate and BMX parks. And Melton Waves has 50 and 25-metre pools plus a wave pool and fitness centre.

Major sporting clubs include:

- ✓ Melton Golf Club
- ✓ Melton Football and Netball Club
- ✓ Melton Cricket Club
- ✓ Melton Phoenix Soccer Club
- ✓ Melton Centrals Football Club
- ✓ Melton South Little Athletics
- ✓ Kurunjang Tennis Club
- ✓ Melton Rugby Union
- ✓ Melton Bowling Club



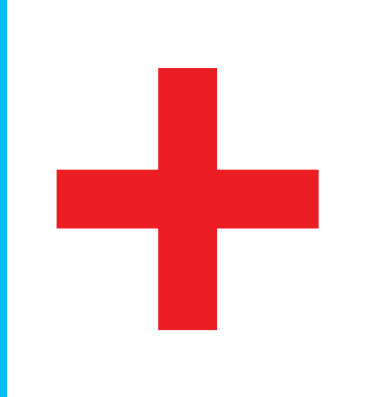
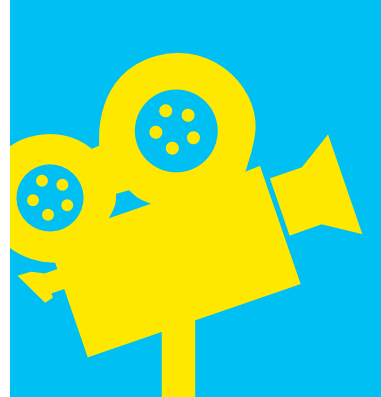
## Shop, eat, enjoy

The local Woodgrove Central Shopping Centre now boasts over 80 stores, including Kmart and Big W, and is undergoing a \$150 million expansion.

Plus there's a wide selection of restaurants on the menu, including Italian, Asian and contemporary cuisine. You can dine al fresco then catch a movie at Reading Cinemas.

Melton also boasts:

- ✓ 19 hairdressers
- ✓ 22 restaurants and eateries
- ✓ 20 medical centres
- ✓ 16 places of worship
- ✓ A fresh produce market





## At your leisure

There's lots to do with your spare time in Melton.

Melton Golf Club welcomes both members and visitors to its bar, bistro and course.

Tabcorp Park hosts 120 harness race meetings annually as well as music and other entertainment. There are bars, dining and gaming facilities.



## Pennyroyal – Melton living at its best

Taking its name from a beautiful flower, Pennyroyal features numerous parks, winding walking trails and plenty of open space.

Blocks range from 300m<sup>2</sup> to 700m<sup>2</sup> and with prices below the Melbourne median, Melton remains affordable. House and land packages by Melbourne's leading builders are also available.



### The best value in Melbourne's West!

\*Hoppers Crossing includes  
Tarneit/Truganina/  
Werribee/Wyndham Vale

Source: National Land Survey  
from CKC/Research 4, Dec 2012

